



GREATSPOT  
Immobilien

Loft-like designer penthouse with  
retro rosewood ceilings, slate and  
raw granite fireplace, unique!  
Greatspot in the center of Bludenz  
Werdenbergerstr. 2 UF 2 | 6700 Bludenz

# Loft-like designer penthouse with retro rosewood ceilings, slate and raw granite fireplace, unique! Greatspot in the center of Bludenz

Werdenbergerstr. 2 UF 2 | 6700 Bludenz

## Description

This beautiful, loft-like designer penthouse is located on the 2nd floor (lift available) of a beautiful building in the city centre and can be rented commission-free. Although it is located in the city centre, it is still close to nature and you can enjoy a wonderful panoramic view of the mountains from the flat. The 93 m<sup>2</sup> living space is optimally divided into a loft-like living room, a dining room, a hallway, 2 bedrooms, a bathroom including bathtub, shower and toilet, a separate toilet, a wardrobe and a kitchen. In winter, an open marble fireplace invites you to relax next to the fire, while in summer the sun can be enjoyed on the 23 m<sup>2</sup> terrace and in the garden. The first-class furnishings include floors of marble and Coffee Bamboo solid wood parquet and partly palisander wood ceilings. The infrastructure and supply (shops, doctors, pharmacies, schools, etc.) is excellent. The offer is completed by the use of the garden, parking spaces in front of the house and a cellar compartment.

Living Space: 193 m<sup>2</sup>

Terrace: 10 m<sup>2</sup>

Garage: 0

# Photos



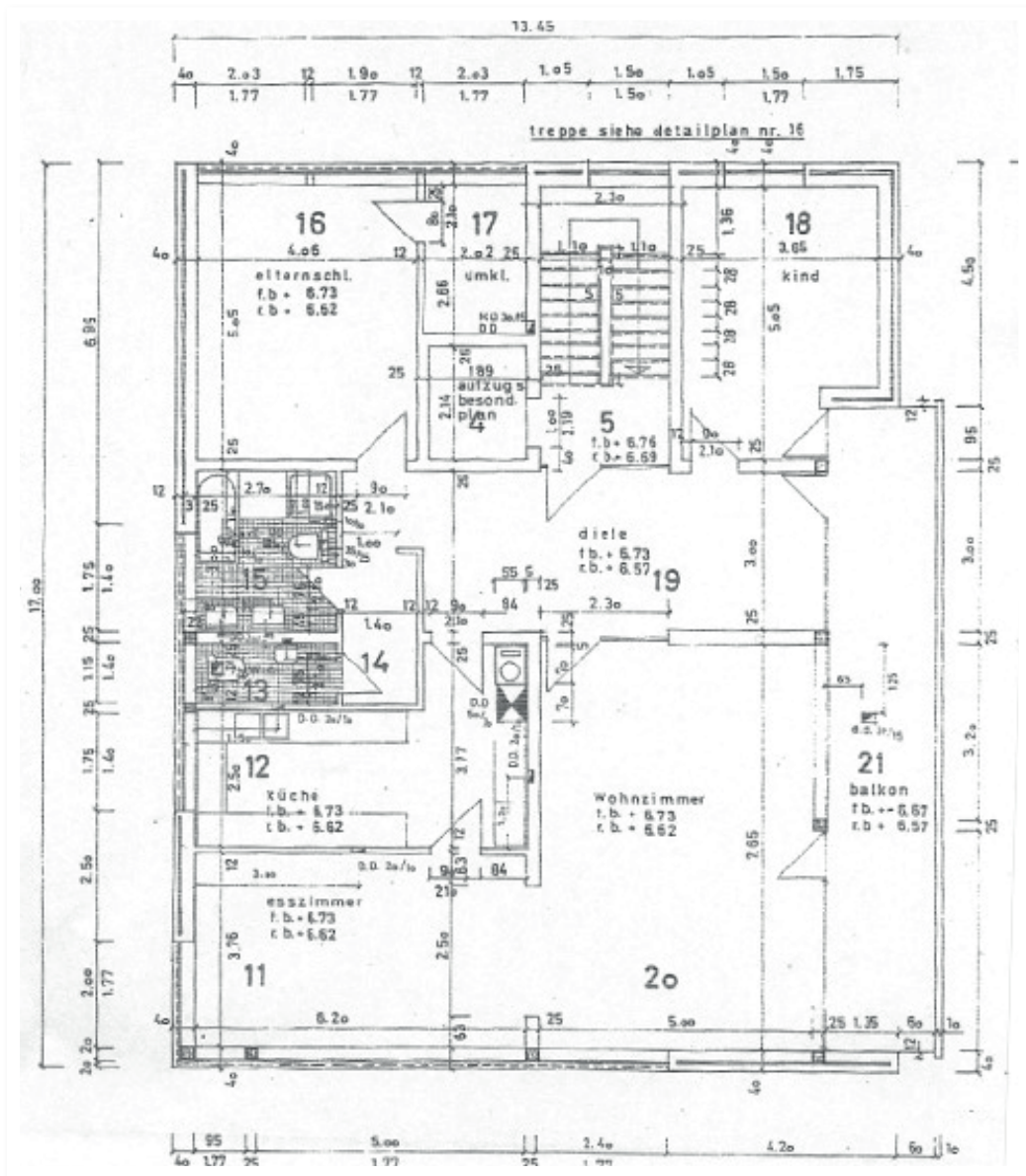
# Photos



# Photos



# Floor Plan



# Energy Pass



# Site Map



**GREATSPOT**  
Immobilien

Contact  
✉ [info@greatspot.at](mailto:info@greatspot.at)